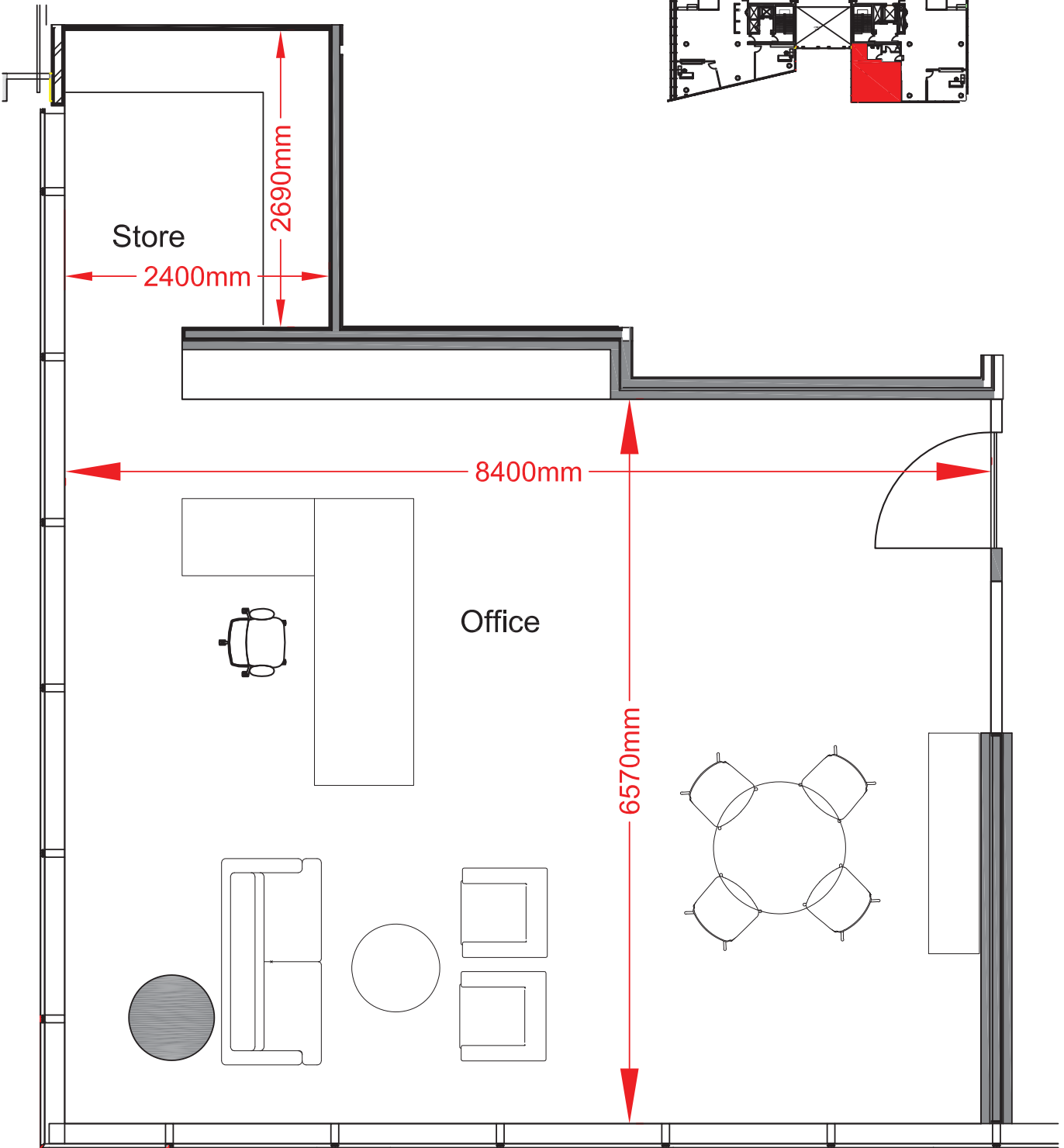
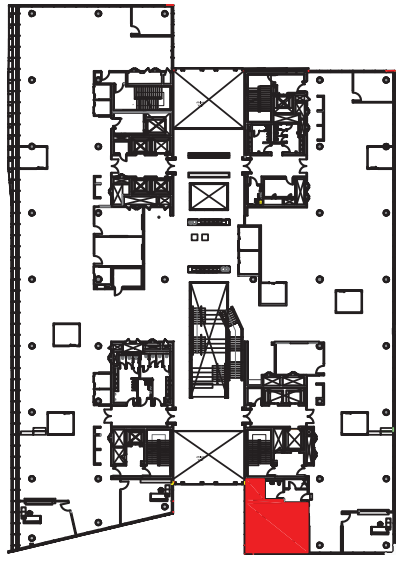
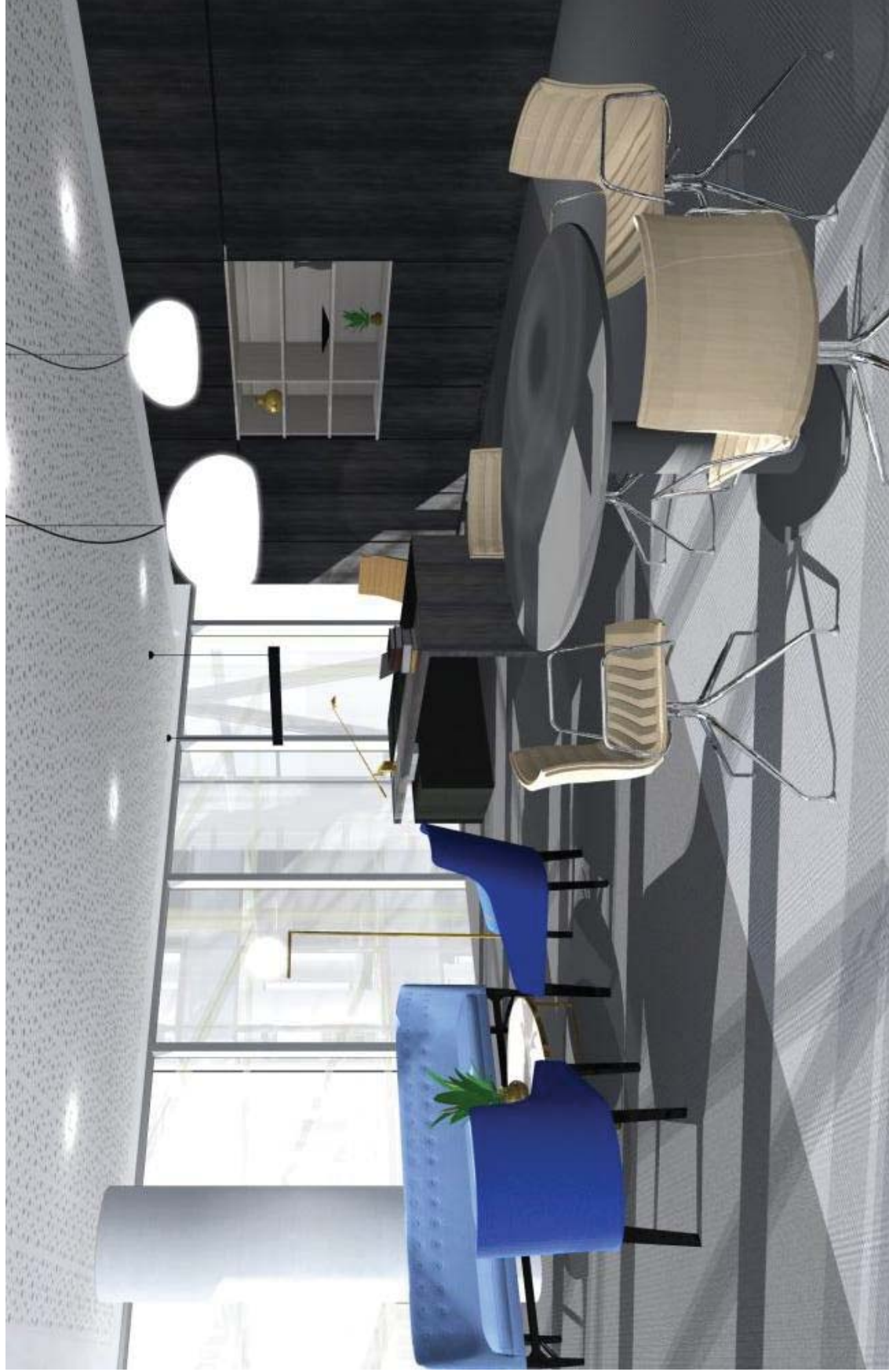


## Schedule of Records for FOI: Summary of Decision Making

Record No.	Date of Record	Brief Description	No. of Pages	Author	Type of Record (e.g. email/ letter)	Decision: Grant/ Part Grant/ Refuse	Section of Act, if Applicable	Record Edited/ Identify Deletions
1	Undated	Indicative visual materials for the Office of the Governor (including plans and measurements)	2	Central Bank	Images	Grant	N/A	N/A
2	Undated	List of and costs of all freestanding furniture in the Office of the Governor (Note: no decorative items/art have been purchased for this office)	1	Central Bank	Spreadsheet	Grant	N/A	N/A
3	Undated	Specification for carpet, blinds and light fittings purchased for the Office of the Governor	4	Central Bank	document	Grant	N/A	N/A



Central Bank of Ireland  
Governor's Office



## Governor's Office

		Unit Cost	Quantity	Cost
Desk	Manufactured by 'Bespoke Studio' MJ Flood Interiors	€5,060.00	1	€5,060.00
Task Chair	Existing Chair to be used			N/A
Sofa	Lyndon Clarence	€3,300.00	1	€3,300.00
Coffee table	Manufactured by 'Bespoke Studio' MJ Flood Interiors	€1,203.00	1	€1,203.00
Lounge Chairs x 2	Lyndon Boss Clarence	€1,582.00	2	€3,164.00
Meeting Table	Manufactured by 'Bespoke Studio' MJ Flood Interiors	€1,592.00	1	€1,592.00
Meeting Chairs x 4	Vitra Mid back Soft Pad Charles Eames Chair	€1,502.00	4	€6,008.00
Credenza	Manufactured by 'Bespoke Studio' MJ Flood Interiors	€3,036.00	1	€3,036.00
Decorative Items	No decorative items have been purchased for this office			N/A
Art	No Art has been purchased for this office			N/A

€23,363.00 excl. VAT

**Carpet Specification:**

Two types of carpet tile are being used in the Governor's Office from Interface, the Scandinavian Collection, shown highlighted below. These carpet types are used throughout the building and are not unique to the Governor's Office.



303103 STOCKHOLM



303119 VISBY



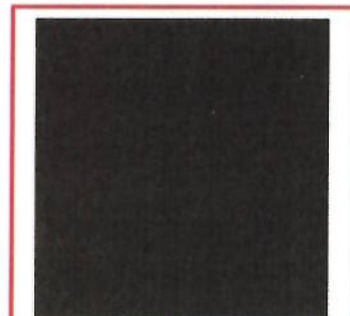
303105 MALMO



303100 BERGEN



303101 HELSINKI



303102 REYKJAVIK

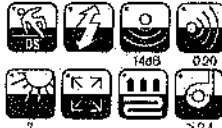
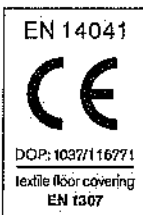
**Blinds Specification:**

The standard specification blinds for the building are being installed in the Governor's office. The specification for the blinds is Uniview 3% manually operated roller blind with steel ball chain to meet solar/ glare performance requirements.

<b>Product Definition</b>	Microtuft Patterned Level Loop Tile
Konstruktion	Gemusterte Microtuft-Schlingenquallität
Descripción	Moqueta modular bucle de bajo perfil con diseño (Microtuft)
Description	Dalle de moquette Microtuft à velours bouclé
Type	Microtuft bouclé
Descrizione	Bouclé microtuft
<b>Pile Material</b>	100% Solution Dyed Nylon, contains recycled content
Polfasematerial	100% Solution Dyed Polyamid, enthält recycelte Anteile
Composició Fibra	100% Poliamida tintada en massa, con contenido reciclado
Compositio	100% Polyamide teint massé, contenant des éléments recyclés
Poolmaterial	100% Solution Dyed Nylon, bevat gerecycleerd materiaal
Fibra	100% Poliamide tinta in massa, contiene ugualmente materiale riciclato
<b>Pile Yarn Weight / Poleinsatzgewicht / Peso Fibra /</b>	400 g/m <sup>2</sup> ± 5%
Poids de fibre / Poolinsetgewicht / Peso Felpa	
<b>Total Weight / Gesamtgewicht / Peso Total / Poids total /</b>	3954 g/m <sup>2</sup> ± 5%
Totaalgewicht / Peso Totale	
<b>Total Thickness / Gesamtdicke / Espesor Total /</b>	4.6 mm ± 0.5 mm
Epaisseur totale / Totale dikte / Altezza Totale	
<b>Gauge/Ends 10 cm / Teilung x 10 cm / Galga x 10 cm /</b>	4/64 – 50.4
Jauge-Rangs par 10 cm / Rijen per 10 cm / Serraggio x 10 cm	
<b>Tufts per m<sup>2</sup> / Noppenzahl/m<sup>2</sup> / Puntadas m<sup>2</sup> / Densité du tuft par m<sup>2</sup> /</b>	176,400 ± 5%
Aantal noppen per m <sup>2</sup> / Densità Punt	
<b>Backing Type / Rückenkonstruktion / Söpporte /</b>	Graphlex®
Sous-couche / Rugitvoering / Sottotondo	
<b>Wear Classification / Beanspruchungsklasse / Clasificación al tráfico /</b>	Heavy Contract (EN 1307)
Classement d'usage et de confort / Gebruiksintensiteit / Resistenza all'usura	Class 33 / LC1

<b>Radiant Panel / Schwerentflammbarkeit / Clasificación Al Fuego /</b>	(EN ISO 9239-1)					
Classement feu / De Radiant Panel Test / Valutazione delle proprietà ignifughe	Euroclass CII s1 (EN 13501-1)					
<b>Dimensional Stability / Dimensionsstabilität / Estabilidad Dimensional /</b>	≤ 0.2% (EN 986)					
Stabilité dimensionnelle / Dimensionale stabilität / Test Stabilità dimensionale						
<b>Impact Sound Insulation (ΔL<sub>w</sub>) / Trittschallverbesserungsmaß /</b>	14 dB (EN ISO 10140-3)					
Impacto Aislamiento Acústico / Réduction du bruit d'Impact /						
Contactgeluid absorptie / Isolamento all'impacto acústico						
<b>Rating of Sound Absorption / Gewichteter Schallabsorptionskoeffizient /</b>	α <sub>w</sub> 0.15 (EN ISO 11654)					
Clasificación de Absorción de Sonido / Coefficient d'absorption acoustique /						
Waarde geluidsabsorptie / Valutazione dell'assorbimento acustico						
<b>Sound Absorption / Schallabsorptionsgrad / Absorción de Sonido /</b>						
Absorption acoustique / Geluidsabsorptie / Assorbimento acustico						
<b>125Hz</b>	<b>250Hz</b>	<b>500Hz</b>	<b>1000Hz</b>	<b>2000Hz</b>	<b>4000Hz</b>	(EN ISO 354)
0.01	0.00	0.06	0.17	0.32	0.30	α <sub>s</sub>

**Style** 30803 5m<sup>2</sup> - 20 tiles per box (50 x 50 cm ± 0.2%)



Interface European Manufacturing BV reserve the right to change or modify specifications.  
 Interface European Manufacturing BV behält sich das Recht vor, Produktspezifikationen zu ändern oder entsprechend anzupassen.  
 Interface European Manufacturing BV se reserva el derecho a modificar las especificaciones amba referenciadas.  
 Interface European Manufacturing BV se réserve la possibilité de modifier les caractéristiques ci-dessus.  
 Interface European Manufacturing BV behoudt zich het recht voor de specificaties te allen tijde aan te passen.  
 Interface European Manufacturing BV si riserva il diritto di modificare le proprie specifiche tecniche senza preavviso.

## Light Values

Product	Colour No	Colour Name	L Value*	Y Value*
<b>The Scandinavian Collection</b>	303100	Bergen	41,0	11,9
	303101	Helsinki	32,0	7,1
	303102	Reykjavik	23,0	3,8
	303103	Stockholm	41,5	12,2
	303105	Malmö	22,4	3,6
	303112	Copenhagen	30,3	6,4
	303113	Nordkapp	33,4	7,7
	303118	Hekla	22,4	3,6
	303119	Visby	33,7	7,9
	303120	Tórshavn	27,8	5,4
	303121	Narvik	43,1	13,2
	303122	Kirkenes	31,4	6,8

\* **Light Value:** L Value = L according to CIE L\*a\*b\* colour space; Y Value = Light Reflectance Value according to BS 8493

**Lichtreflexionswerte:** L-Wert = L gemäß CIE L\*a\*b\* Farbspektrum, Y-Wert = Lichtreflexionswert gemäß British Standard BS 8493

**Valores de Reflectancia de Luz:** Valor L = L según CIE L\*a\*b\* espacio de color, Valor Y = Valor de reflectancia de luz según el estándar británico BS 8493

**Valeurs concernant la lumière:** Valeur L = L, faisant référence à la méthode CIE L\*a\*b\* pour la couleur, Valeur Y = Valeurs de réflectance de la lumière selon le British Standard BS 8493

**Licht waarden:** L Waarde = L volgens CIE L\*a\*b\* kleurruimte, Y Waarde = Licht Reflectie Waarde volgens BS 8493

**Indici di riflettanza alla luce:** Indica L = L secondo CIE L\*a\*b\* colour space, Indice Y = Indice di riflettanza alla luce secondo la norma BS 8493

We have tried our very best to accurately represent product colours. However, due to the nature of printed materials, colour of actual products may vary slightly. Please request a sample to see actual product colour.

Wir versuchen die Farben so naturgetreu wie möglich wiederzugeben. Farbabweichungen lassen sich jedoch nicht ausschliessen. Bitte fordern Sie ein Muster an, um sich von der tatsächlichen Farbe zu überzeugen.

Hemos intentado representar con la máxima precisión posible los colores del producto. Sin embargo, debido a la naturaleza de los materiales impresos, el color de los productos reales puede variar ligeramente. Por favor, solicite una muestra para ver el color real del producto.

Les couleurs présentées se rapprochent au maximum des couleurs réelles. Toutefois, les procédés d'impression des matériaux peuvent entraîner une légère variation du coloris. Merci de demander un échantillon pour constater la couleur des produits.

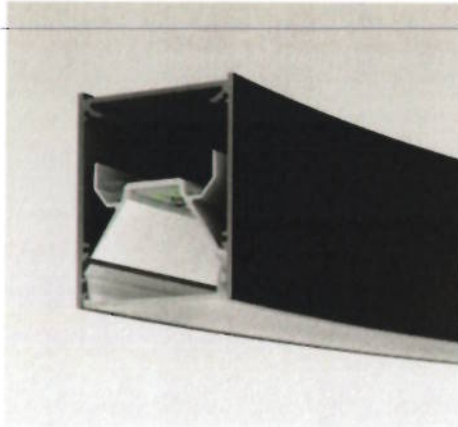
Wij hebben getracht de productkleuren zo goed mogelijk te reproduceren. De kleuren van geprint materiaal kunnen echter altijd enigszins afwijken. Vraag altijd stalenmateriaal aan om de daadwerkelijke kleur te beoordelen.

Vi har gjort vårt bästa för att representera korrekta produktfärger. Emellertid, på grund av typon av tryckt material, kan färgen på faktiska produkter variera något. Beställ gärna ett prov för att se aktuell produktfärg.

**Lighting Specifications:**

There are 3 lighting types being used in the Governor's Office, all of which are used in other various locations throughout the building; there are no unique fittings to the Governor's Office.

**Ref: Type C6**



Description: Suspended version of Type C luminaire. Housing made of aluminium, powder coated black or white. High performance opal cover with satin PMMA diffuser for uniform illumination diffuser. DALI dimmable. Adjustable cable suspension.

Manufacturer/Range: Mino 60 – Suspended

Dimensions: 1488mm (L) x 60mm (W) x 78mm (H)

**Ref: Type B7**

Description: Fluid Pendant

Manufacturer/Range: Muuto 420mm Ø

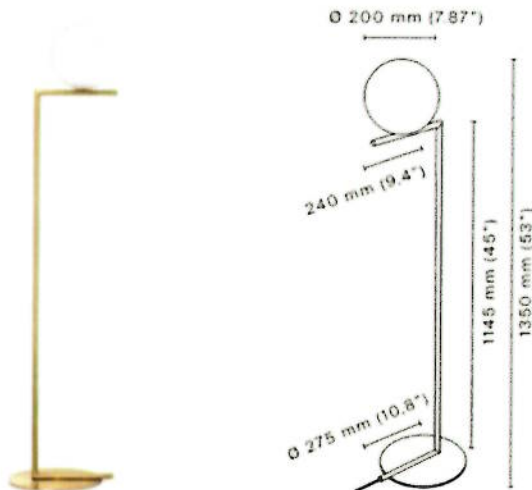


**Ref: Type B7A**

Description: Fluid Pendant

Manufacturer/Range: Muuto 230mm Ø

**Ref: Type B10**



Description: Floor standing lamp, blown opaline glass diffuser with a brass or chrome steel body  
Manufacturer/Range: FLOS IC Lights F